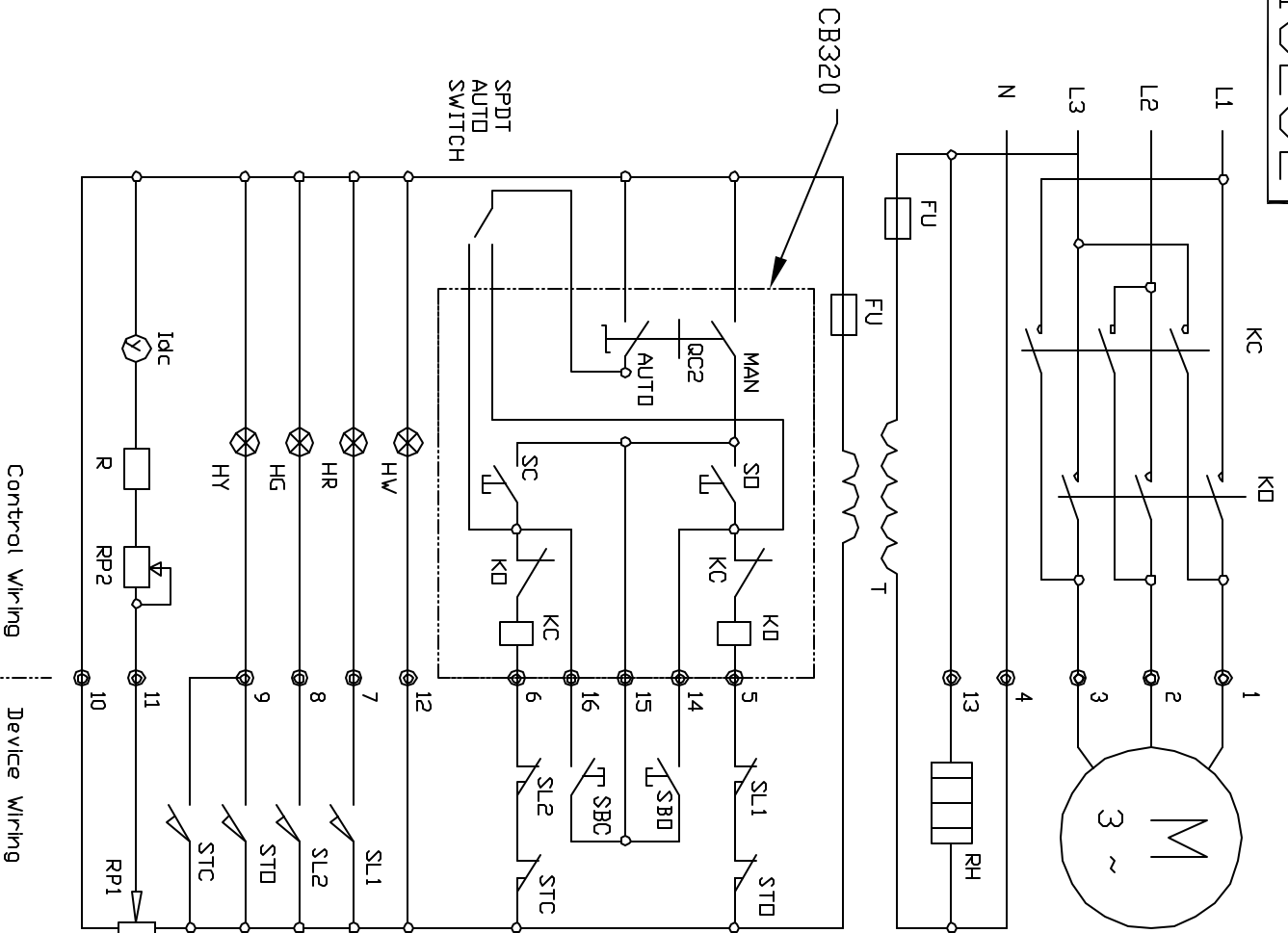


815262



- M Motor
- KD AC, Contactor
- KC Fuse
- FU Auto - Dff - Manual Selector Switch
- QC2 Indicator
- Idc Resistance
- RP1 Resistance
- RP2 Resistance
- RH Heater
- T Transformer
- SD Open - Dff - Close Selector Switch
- SC Local Open - Close Switch
- SBC Indicator Lights
- HW HG HY Torque Switch
- STD Travel Limit Switch
- STC Travel Limit Switch
- SL1 Travel Limit Switch
- SL2 Travel Limit Switch

NAME: NT Series Wiring with		DWN	BF	CHKD
CB320 Control Box		08.23.04		
		REV	-	
All Product In STE IS Nonce Dtd 4/5/20 (512) 539-4234 Fax: (512) 539-2176			SCALE	N/A
THE DESIGN AND SPECIFICATIONS CONTAINED IN THIS DRAWING ARE THE PROPERTY OF VALVYS. NO PART OF THIS DRAWING MAY BE REPRODUCED OR TRANSMITTED IN ANY FORM OR BY ANY MEANS, ELECTRONIC OR MECHANICAL, INCLUDING PHOTOCOPYING, RECORDING, OR BY ANY INFORMATION STORAGE AND RETRIEVAL SYSTEM, WITHOUT THE WRITTEN PERMISSION OF VALVYS, LLC.		TELEPHONE UNLESS OTHERWISE SPECIFIED DIM. +/- .002 THREE PLACE DECIMAL DIM. +/- .0010 ANGULAR DIM. +/- 0° - 30'		
DID NOT SCALE DRAWINGS				
1	1			
2	2			
3	3			
4	4			
5	5			